

BISHOP LIFTING



**Bishop Lifting
Products, Inc.**

LOAD MONITORING CATALOGUE

Valid from July 2011

CONTENTS

All products within this catalogue include proof testing, calibration certificates and full calibration to National Standards.

All products are supplied with a carry case, battery and user manual.



Page Number	DESCRIPTION
01	Loadlink Plus
02	Radiolink Plus
03	Compound Plus
04	Wireless Shackle Loadcells
05	Wireless Accessories
06	Shackle Loadcells
07	Load Pins
08	Miniweigher Plus
09	Jumboweigher
10	Loadblock Plus
11	Accessories

ACCREDITATIONS

Straightpoint is ISO accredited and a member of the AWRP and LEEA.



CONTACT

Houston, TX (Head Office)

125 McCarty Drive
Houston
TX 77029
USA
T: (713) 674-2266
F: (713) 672-9229
E: houston@lifting.com

Panama City, FL

1901 N. East Avenue
Panama City
Florida 32405
USA
T: (850) 769-1120
F: (850) 769-9077

Cheyenne, WY

309 North American Road
Cheyenne
WY 82007
USA
T: (307) 851-6123
E: rockies@lifting.com

Beaumont, TX

2160 Wellspring
Beaumont
TX 77705
USA
T: (409) 729-9187
F: (409) 724-2659
E: beaumont@lifting.com

Odessa, TX

12828 W. I-20 East
Odessa
TX 79765
USA
T: (432) 332-5922
F: (432) 337-6829
E: odessa@lifting.com

Oklahoma City, OK

T: (405) 426-2440

New Iberia, LA

8416 West Highway 90
New Iberia
LA 70560
USA
T: (337) 369-3903
F: (337) 369-3904
E: newiberia@lifting.com

Rock Springs, WY

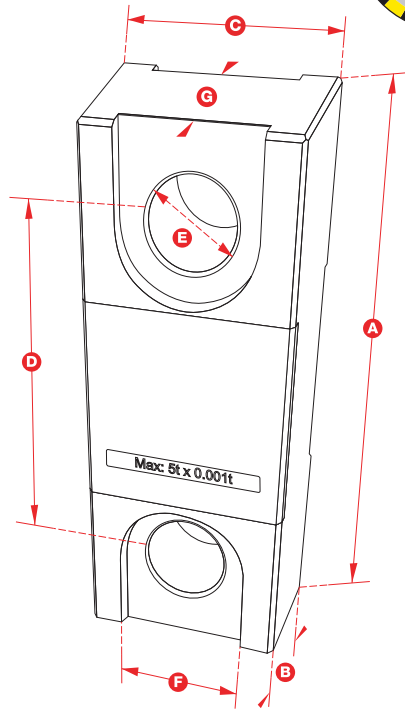
2050 Sunset Drive
Rock Springs
WY 82901
USA
T: (307) 382-6622
F: (307) 382-2401
E: rockies@lifting.com



- Unique audible setpoint alarm to maintain safe load limits
- 5500lb to 999,000lb capacities
- Peak hold function for testing and weighing
- Overload counter to monitor improper use
- Manufactured from traceable materials
- Accurate to ± 0.3% of applied load
- Supplied with carry/storage case
- Industry leader in safety ratings
- Uses standard Crosby fittings
- Rugged and weatherproof



DIMENSIONS (SEE TABLE BELOW)



Part Number	LLP2T5U	LLP5TU	LLP12TU	LLP25TU	LLP50TU	LLP100TU	LLP200TU	LLP250TU	LLP500TU
Capacity	5500lb	11000lb	26000lb	55000lb	110,000lb	220,000lb	440,000lb	550,000lb	999,000lb
Resolution	2lb	2lb	5lb	10lb	20lb	100lb	200lb	200lb	500lb
Accuracy	±0.3% of applied load								
Units	lb, kg, kN, tonne								
Safety Factor	5:1	5:1	5:1	5:1	5:1	4:1	5:1	4:1	3:1
Protection	NEMA4X/IP65								
Battery Type	9v								
Battery Life	80 hours continuous								
Display Type	1" LCD								
Op Temp	14°F to 122°F								
Net Wt	3.3lb	4.8lb	7.7lb	11.5lb	24lb	81.6lb	176.4lb	176.4lb	407.9lb
Shipping Wt	11lb	13.2lb	15.4lb	19.8lb	31.9lb	114.4lb	208lb	208.lb	430lb
Dimension A	8.03	9.80	12.01	13.39	16.69	23.94	27.17	27.17	27.17
Dimension B	1.69	1.69	1.85	2.36	2.95	3.90	5.91	5.91	5.91
Dimension C	3.98	3.98	3.98	4.33	6.42	10.04	12.01	12.01	22.45
Dimension D	5.75	6.50	7.60	8.46	9.06	12.60	13.78	13.78	17.72
Dimension E	0.96	1.50	1.87	2.17	2.99	4.25	4.92	4.92	7.88
Dimension F	1.87	2.60							
Dimension G	0.75	1.26							
Crosby Shackle	G210	G210	G210	G210	G2140	G2140	G2140	G2140	G2140

SPECIFICATIONS [inches]

Bishop Lifting Products, Inc.
LOADLINK PLUS

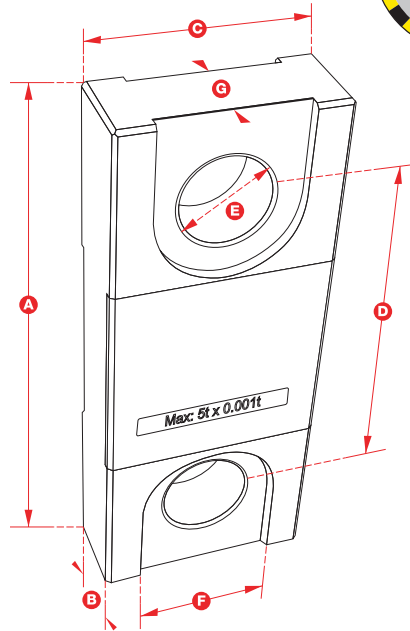




- Unique peak and trough hold function for testing and weighing
- Internal antennae means no chance of accidental breakage
- Radiused steel shackle bushing for greater accuracy
- Telemetry transmitter with 820ft range
- Accurate to $\pm 0.3\%$ of applied load
- Supplied with carry/storage case
- Industry leader in safety ratings
- Rugged and weatherproof
- License free
- 2200lb to 999,000lb capacities



DIMENSIONS (SEE TABLE BELOW)



Part Number	RLP1TU	RLP2T5U	RLP5TU	RLP12TU	RLP25TU	RLP50TU	RLP100TU	RLP200TU	RLP250TU	RLP500TU
Capacity	2200lb	5500lb	11000lb	26000lb	55000lb	110,000lb	220,000lb	440,000lb	550,000lb	999,000lb
Resolution	1lb	2lb	2lb	5lb	10lb	20lb	100lb	200lb	200lb	500lb
Accuracy	$\pm 0.3\%$ of applied load									
Units	lb									
Safety Factor	12:1	5:1	5:1	5:1	5:1	5:1	4:1	5:1	4:1	3:1
Protection	NEMA 4X									
Lithium Battery	Handheld - 800 hours / Loadcell 1600 hours continuous									
Alkaline Battery	Handheld - 400 hours / Loadcell 850 hours continuous (Alkaline batteries included)									
Display Type	7 digit 0.35" LCD									
Op Temp	14°F to 122°F									
Frequency	2.4GHz									
Range	820ft									
Data Rate	1 update per second									
Net Wt	3.3lb	3.3lb	4.8lb	7.7lb	11.5lb	24lb	81.9lb	176.4lb	176.4lb	407.9lb
Shipping Wt	11lb	11lb	13.2lb	15.4lb	19.8lb	31.9lb	114.4lb	208lb	208lb	430lb
Dimension A	8.03	8.03	9.8	12	13.38	16.69	23.94	27.16	27.16	27.17
Dimension B	1.69	1.69	1.69	1.85	2.36	2.95	3.9	5.91	5.91	5.91
Dimension C	3.98	3.98	3.98	3.98	4.33	6.42	10.04	12.01	12.01	22.45
Dimension D	5.75	5.75	6.5	7.60	8.46	9.06	12.60	13.78	13.78	17.72
Dimension E	0.96	0.96	1.5	1.87	2.16	2.99	4.25	4.92	4.92	7.88
Dimension F	1.87	1.87	2.6							
Dimension G	0.75	0.75	1.26							
Crosby Shackle	G210	G210	G210	G210	G210	G240	G240	G240	G240	G2160

SPECIFICATIONS [inches]

Bishop Lifting Products, Inc.
RADIO LINK PLUS



- Based on the Radiolink plus load cell, this system allows you to connect several Radiolinks to a single advanced handheld display and view individual loads and a total load (up to a maximum of 12 Radiolinks in a single system)

- All models are supplied with a carry/storage case

- Select how many Radiolinks you require and then add the advanced handheld along with any other options you may need, including a wireless tally roll printer.



Part Number	RLP1TU	RLP2T5U	RLP5TU	RLP12TU	RLP25TU	RLP50TU	RLP100TU	RLP200TU	RLP250TU	RLP500TU	RLP500TU
Capacity	1100lb	2200lb	5500lb	11000lb	26000lb	55000lb	110,000lb	220,000lb	440,000lb	550,000lb	999,000lb
Resolution	0.5lb	1lb	2lb	2lb	5lb	10lb	20lb	100lb	200lb	200lb	500lb
Accuracy	± 0.3 % of applied load										
Units	lb										
Safety Factor	24:1	12:1	5:1	5:1	5:1	5:1	5:1	4:1	5:1	4:1	3:1
Protection	NEMA 4X										
Battery Type	Handheld - 2 x AA Alkaline / Loadcell 4 x AA Alkaline										
Battery Life	Handheld - 400 hours / Loadcell 850 hours continuous										
Display Type	7 digit 0.35" LCD										
Op Temp	14° F - 122° F										
Net Wt	3.3lb	3.3lb	3.3lb	4.8lb	7.7lb	11.5lb	24lb	81.9lb	176.4lb	176.4lb	407.9lb
Shipping Wt	11lb	11lb	11lb	13.2lb	15.4lb	19.8lb	31.9lb	114.4lb	208lb	208lb	430lb
Dimension A	8.03	8.03	8.03	9.8	12	13.38	16.69	23.94	27.16	27.16	27.17
Dimension B	1.69	1.69	1.69	1.69	1.85	2.36	2.95	3.9	5.91	5.91	5.91
Dimension C	3.98	3.98	3.98	3.98	3.98	4.33	6.42	10.04	12.01	12.01	22.45
Dimension D	5.75	5.75	5.75	6.5	7.60	8.46	9.06	12.60	13.78	13.78	17.72
Dimension E	0.96	0.96	0.96	1.5	1.87	2.16	2.99	4.25	4.92	4.92	7.88
Dimension F	1.87	1.87	1.87	2.6							
Dimension G	0.75	0.75	0.75	1.26							
Crosby Shackle	G210	G210	G210	G210	G210	G240	G240	G240	G240	G240	G2160

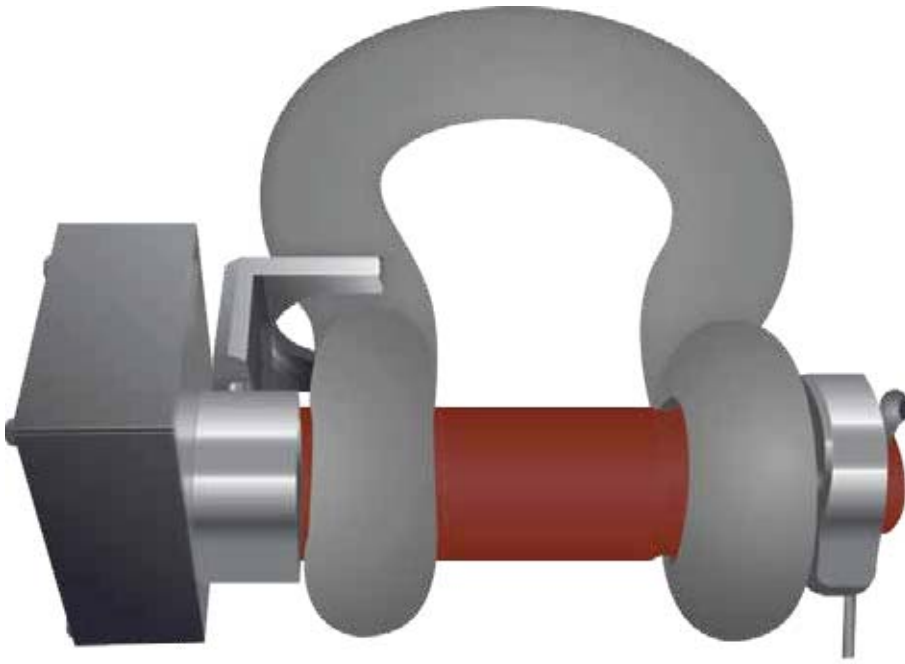
SPECIFICATIONS [inches]

ADVANCED HANDHELD DISPLAY

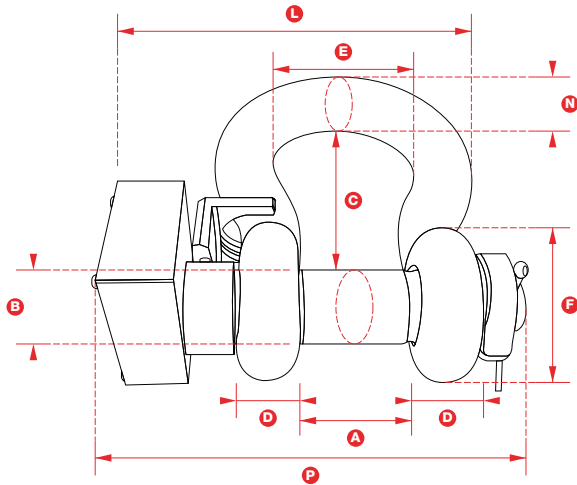
Bishop Lifting Products, Inc.

InConcert™ COMPOUND PLUS





DIMENSIONS (SEE TABLE BELOW)

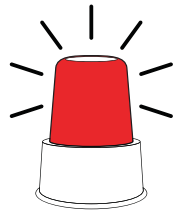
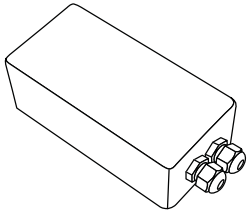


- Simple to install bow shackle load cell
- Constructed from high tensile carbon steel
- Sealed to NEMA 4X Standards/can be sealed to higher
- Proof tested to 150% of normal rated load
- Supplied with the standard RadioLink hand held display

Part Number	WLS1TU	WLS3.25TU	WLS6.5TU	WLS12TU	WLS17TU	WLS25TU	WLS55TU	WLS85TU	WLS120TU	WLS200TU	WLS300TU	WLS400TU
Capacity	2200lb	7000lb	14,000lb	26,000lb	37,000lb	55,000lb	120,000lb	185,000lb	260,000lb	440,000lb	660,000lb	880,000lb
Resolution	2lb	10lb	10lb	20lb	50lb	50lb	100lb	100lb	200lb	500lb	1000lb	1000lb
Accuracy	±1%											
Units	lb											
Safety Factor	300% of rated load											
Protection	NEMA 4X											
Op Temp	-4° F - 158° F											
Net Wt	4.4lb	6.2lb	7lb	17.6lb	26.4lb	39.7lb	55.1lb	99.2lb	187.4lb	474lb	802.5lb	1144.4lb
Shipping Wt	11lb	12.8lb	13.7lb	24.3lb	33.1lb	46.3lb	61.7lb	105.8lb	194lb	480.6lb	809.1lb	1153lb
Dimension A	0.66	1.06	1.44	2.03	2.38	2.87	3.25	4.13	5.00	7.24	8.39	8.27
Dimension B	0.44	0.75	1.00	1.38	1.63	2.01	2.24	2.76	3.25	4.76	5.98	7.01
Dimension C	1.44	2.38	3.31	4.68	5.75	7.01	7.76	10.51	13.00	15.63	19.49	22.52
Dimension D	0.38	0.63	0.88	1.25	1.50	1.75	2.01	2.62	2.99	3.76	4.76	6.5
Dimension E	1.03	1.69	2.28	3.24	3.88	5.00	6.46	7.24	7.87	10.98	12.99	12.99
Dimension F	0.91	1.5	2.09	2.99	3.62	4.17	4.8	5.71	6.5	10.51	12.01	14.02
Dimension H	2.48	4.17	5.83	8.27	10.00	12.32	13.7	17.83	21.5	29.25	35.24	40.24
Dimension L	2.92	4.07	5.16	6.89	8.03	10	11.1	14.02	15.51	22.13	25.00	25.98
Dimension N	0.38	0.69	0.97	13.82	1.62	2.24	2.4	3.11	3.62	5.98	6.77	7.24
Dimension P	2.16	3.52	4.72	6.5	7.72	9.05	10.39	13.54	16.5	20.51	24.33	27.95

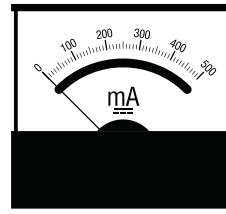
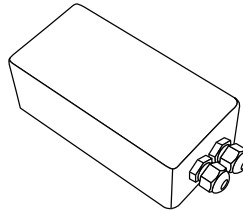
SPECIFICATIONS [inches]

Our range of wireless accessories may be used with the Radiolink, Compound Link or wireless loadshackle ranges.



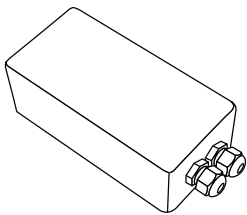
T24-RM1AU

Supplied with an audiovisual alarm, the T24-RM1 can be programmed to any Radiolink to monitor loads. Then at a preset point the alarm will activate and open or close a 240 AC, 5 amp relay. Ideal for use in a wireless overload detection system.



T24-A01iU

Provides a configurable analog output for the range of Straightpoint wireless loadcells and is housed in P67 housing for industrial installation. The output can be selected from the pre-calibrated voltage and current ranges. 0-10 volts, ±10 volts, 0-5 volts, ±5 volts, 0-20mA, 4-20mA. Useful for integrating with a PLC.

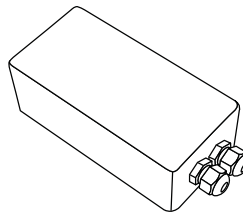


T24-S0U

This module generates a programmable RS232 serial output ASCII string which can include data from up to 8 Compound plus loadcells as well as optionally sum them. The output is suitable for connecting to many devices that require simple serial RS232 input.

RDCPU

Wireless Windows-based software that allows the operator full remote control of the loadcell. Can be set to datalog (time/date and load) into a spreadsheet by user input time interval (min 30 seconds). A spare USB port is required.



T24-S0SDU

5 high red LED slave display that will wirelessly display the load on a Radiolink. Suitable for mounting on a crane gantry, requires mains power.

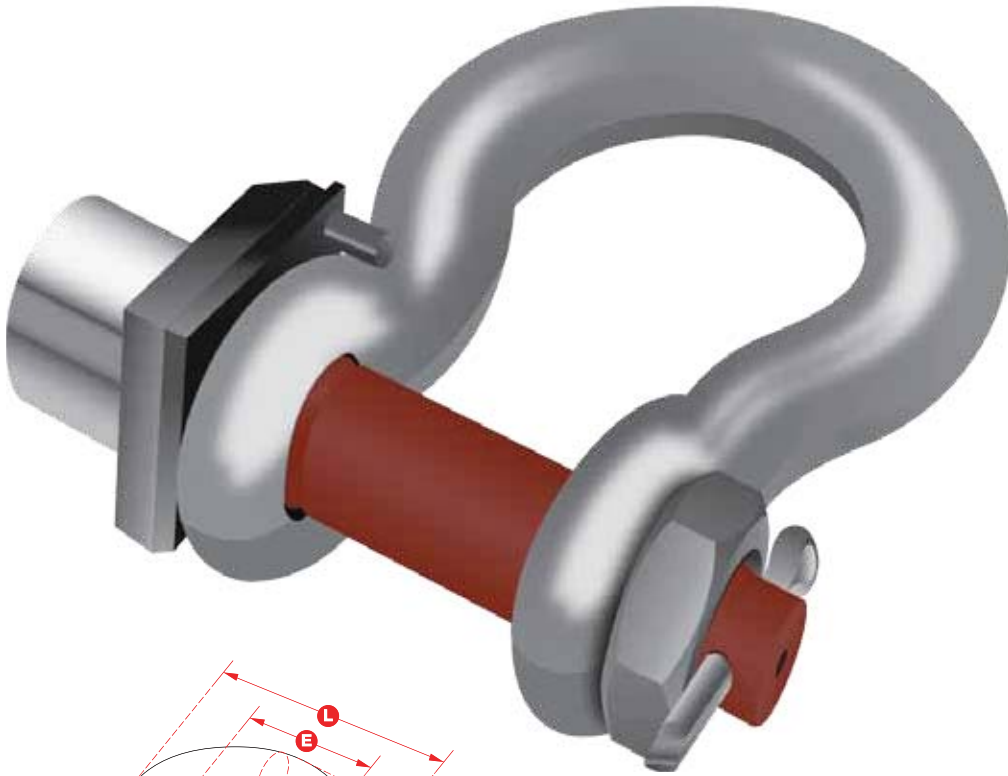
T24-RDCU

Available in approximately six months time.

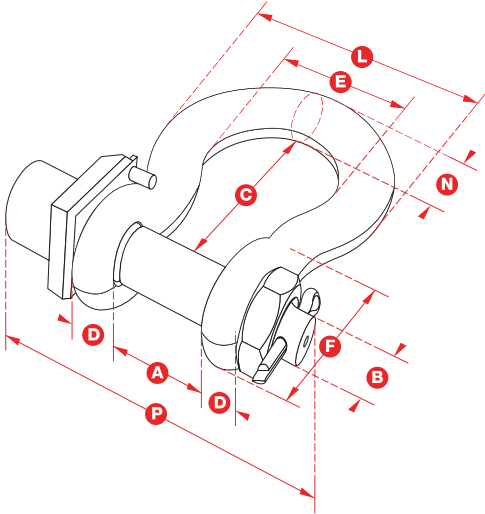
Bishop Lifting Products, Inc.

WIRELESS ACCESSORIES





DIMENSIONS (SEE TABLE BELOW)



- Simple to install bow Shackle Load Cell
- Constructed from high tensile carbon steel
- Sealed to NEMA 4X Standards/can be sealed to higher
- Proof tested to 150% of normal rated load
- Requires connection to Straightpoint Load Cell Instrumentation

Part Number	SLB1TU	SLB3.25TU	SLB6.5TU	SLB12TU	SLB17TU	SLB25TU	SLB55TU	SLB85TU	SLB120TU	SLB200TU	SLB300TU	SLB400TU
Capacity	2200lb	7000lb	14,000lb	26,000lb	37,000lb	55,000lb	120,000lb	185,000lb	260,000lb	440,000lb	660,000lb	880,000lb
Resolution	1lb	10lb	10lb	20lb	50lb	50lb	100lb	100lb	200lb	500lb	1000lb	1000lb
Accuracy	±1%											
Units	lb											
Safety Factor	300% of rated load											
Protection	NEMA 4X											
Op Temp	-4° F - 158° F											
Net Wt	4.4lb	6.2lb	7lb	17.6lb	26.4lb	39.7lb	55.1lb	99.2lb	187.4lb	474lb	802.5lb	1144.4lb
Shipping Wt	11lb	12.8lb	13.7lb	24.3lb	33.1lb	46.3lb	61.7lb	105.8lb	194lb	480.6lb	809.1lb	1153lb
Dimension A	0.66	1.06	1.44	2.03	2.38	2.87	3.25	4.13	5.00	7.24	8.39	8.27
Dimension B	0.44	0.75	1.00	1.38	1.63	2.01	2.24	2.76	3.25	4.76	5.98	7.01
Dimension C	1.44	2.38	3.31	4.68	5.75	7.01	7.76	10.51	13.00	15.63	19.49	22.52
Dimension D	0.38	0.63	0.88	1.25	1.50	1.75	2.01	2.62	2.99	3.76	4.76	6.5
Dimension E	1.03	1.69	2.28	3.24	3.88	5.00	6.46	7.24	7.87	10.98	12.99	12.99
Dimension F	0.91	1.5	2.09	2.99	3.62	4.17	4.8	5.71	6.5	10.51	12.01	14.02
Dimension H	2.48	4.17	5.83	8.27	10.00	12.32	13.7	17.83	21.5	29.25	35.24	40.24
Dimension L	1.78	2.93	4.02	5.75	6.89	8.86	9.96	12.87	14.37	20.98	25.00	25.98
Dimension N	0.38	0.69	0.97	13.82	1.62	2.24	2.4	3.11	3.62	5.98	6.77	7.24
Dimension P	2.16	3.52	4.72	6.5	7.72	9.05	10.39	13.54	16.5	20.51	24.33	27.95

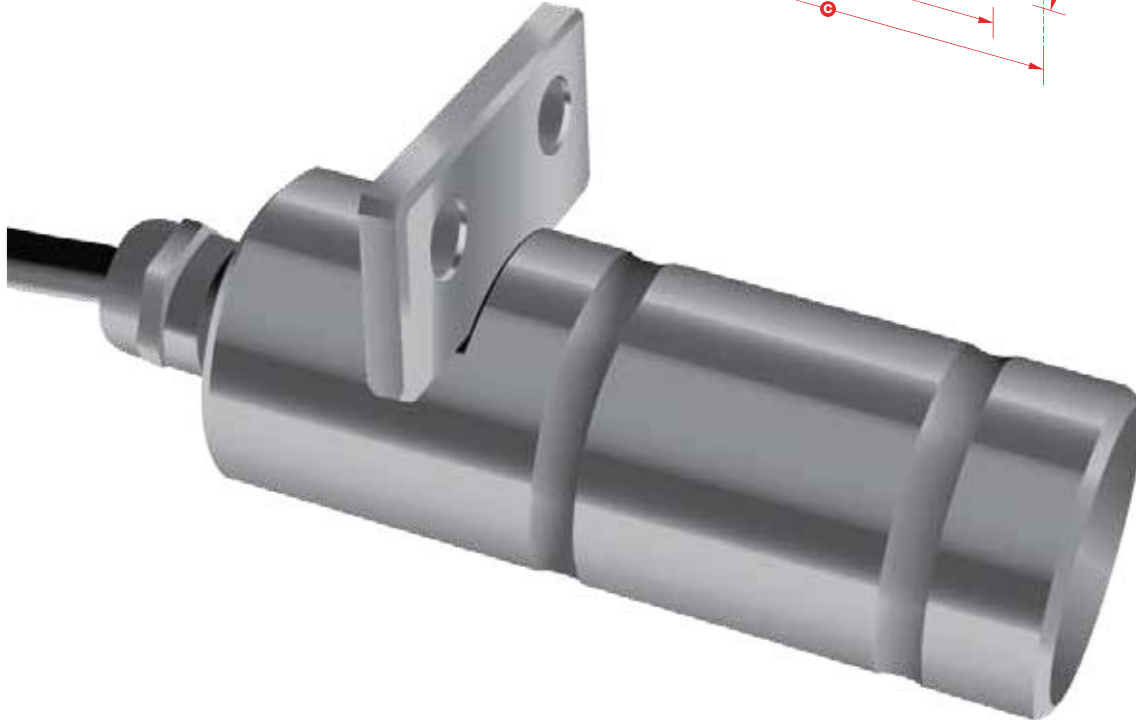
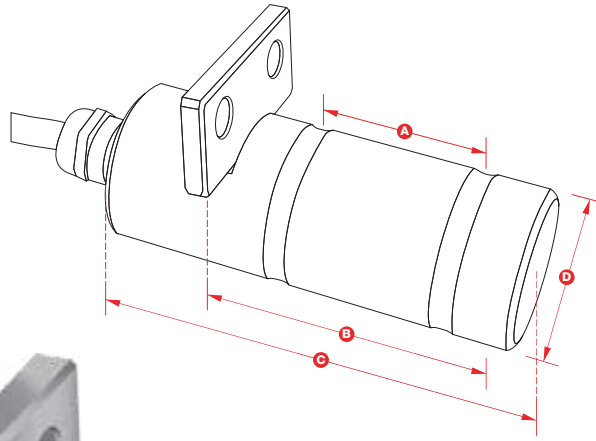
SPECIFICATIONS [inches]

Bishop Lifting Products, Inc.
SHACKLE LOADCELLS



DIMENSIONS (SEE TABLE BELOW)

The Straightpoint range of Load Measurement Pins are designed for general use. They are machined from high tensile stainless steel and are normally supplied complete with an anti-rotation plate. They are built to exacting standards and are suitable for use in exposed situations and can be supplied to withstand immersion in seawater. This range of load cells is Proof Loaded to 150% of the normal rated load. 30ft cable supplied as standard - other lengths available on request.



Part N°	SLB1TU	SLB3.5TU	SLB6.5TU	SLB12TU	SLB17TU	SLB25TU	SLB55TU	SLB85TU	SLB120TU	SLB200TU	SLB300TU	SLB400TU
Capacity	2200lb	7000lb	14,000lb	26,000lb	37,000lb	55,000lb	120,000lb	185,000lb	260,000lb	440,000lb	660,000lb	880,000lb
Resolution	1lb	10lb	10lb	20lb	50lb	50lb	100lb	100lb	200lb	500lb	1000lb	1000lb
Accuracy	±1%											
Units	lb											
Safety Factor	300 % of rated load											
Protection	NEMA 4X											
Op Temp	-4° F - 158° F											
Net Wt	4.4lb	6.2lb	7lb	17.6lb	26.4lb	39.7lb	55.1lb	99.2lb	187.4lb	474lb	802.5lb	1144.4lb
Shipping Wt	11lb	12.8lb	13.7lb	24.3lb	33.1lb	46.3lb	61.7lb	105.8lb	194lb	480.6lb	809.1lb	1153lb
Dimension A	0.66	1.06	1.44	2.03	2.38	2.87	3.25	4.13	5.00	7.24	8.39	8.27
Dimension B	0.44	0.75	1.00	1.38	1.63	2.01	2.24	2.76	3.25	4.76	5.98	7.01
Dimension C	1.44	2.38	3.31	4.68	5.75	7.01	7.76	10.51	13.00	15.63	19.49	22.52
Dimension D	0.38	0.63	0.88	1.25	1.50	1.75	2.01	2.62	2.99	3.76	4.76	6.5
Dimension E	1.03	1.69	2.28	3.24	3.88	5.00	6.46	7.24	7.87	10.98	12.99	12.99
Dimension F	0.91	1.5	2.09	2.99	3.62	4.17	4.8	5.71	6.5	10.51	12.01	14.02
Dimension H	2.48	4.17	5.83	8.27	10.00	12.32	13.7	17.83	21.5	29.25	35.24	40.24
Dimension L	1.78	2.93	4.02	5.75	6.89	8.86	9.96	12.87	14.37	20.98	25.00	25.98
Dimension N	0.38	0.69	0.97	13.82	1.62	2.24	2.4	3.11	3.62	5.98	6.77	7.24
Dimension P	2.16	3.52	4.72	6.5	7.72	9.05	10.39	13.54	16.5	20.51	24.33	27.95

SPECIFICATIONS [ins]

Please note: if you require a Loadpin to a particular size and design, download our Loadpin questionnaire and return POA. Wireless Load Pins available POA.

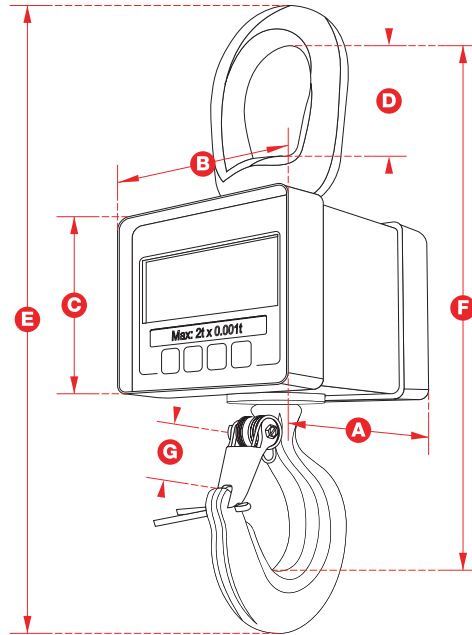
Bishop Lifting Products, Inc.
LOAD PINS





- Leader in compact size for minimal headroom loss and versatility
- Unique audible setpoint alarm to maintain safe load limits
- Peak hold function for testing and weighing
- Overload counter to monitor improper use
- Manufactured from traceable materials
- Accurate to ±0.3% of applied load
- Uses standard Crosby fittings
- Rugged and weatherproof
- 5:1 safety rating

DIMENSIONS (SEE TABLE BELOW)



Part Number	MWP1TU	MWP2TU	MWP5TU
Capacity	2200 lb	4400 lb	11000 lb
Resolution	1 lb	2 lb	2 lb
Accuracy	± 0.3 % of applied load		
Units	lb		
Safety Factor	5:1		
Protection	NEMA 4X/ P65		
Battery Type	9v		
Battery Life	80 hours continuous		
Display Type	1" LCD		
Op Temp	14° F - 122° F		
Net Wt	3.3 lb	6.8 lb	19.2 lb
Shipping Wt	12.1 lb	15.4 lb	27.5 lb
Dimension A	3.23	4.61	5.35
Dimension B	4.45	4.41	4.41
Dimension C	3.19	3.62	3.62
Dimension D	1.97	2.52	3.86
Dimension E	9.45	12.6	17.48
Dimension F	8.19	10.67	14.37
Dimension G	0.87	1.1	1.65

Non-indicating wireless version is available (price on application).

Bishop Lifting Products, Inc.
MINIWEIGHER PLUS



20t VERSION

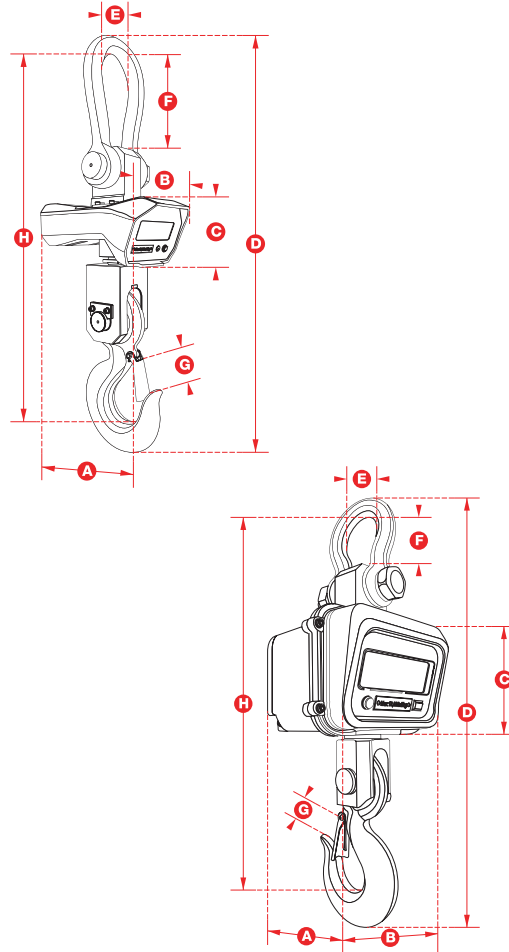


5t and 10t VERSION



- Designed to be used in harsh industrial environments
- Bright LED display makes it easy to read in low light applications
- Large keys for ease of use with gloved hands
- Remote control included with tare and hold facility
- Accurate to $\pm 0.3\%$ of applied load

DIMENSIONS (SEE TABLE BELOW)

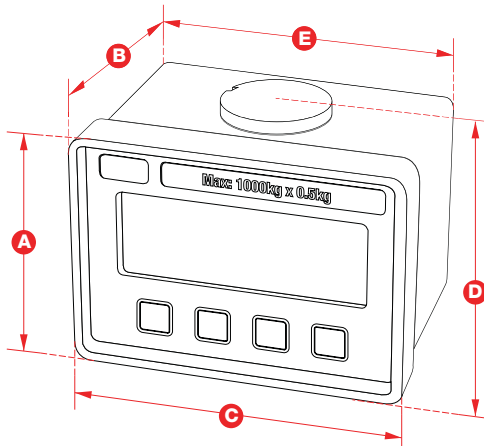


SPECIFICATIONS [inches]

Part Number	JW5TU	JW10TU	JW20TU
Capacity	11,000lb	22,000lb	44,000lb
Resolution	5lb	10lb	20lb
Accuracy	$\pm 0.3\%$ of applied load		
Units	lb		
Safety Factor	5:1		
Protection	P54		
Battery Type	Internal rechargeable		
Battery Life	20 hours		
Display Type	1.2" LED		
Op Temp	14° F - 104° F		
Net Wt	39.7lb	63.9lb	165.4lb
Shipping Wt	50.7lb	75lb	176.4lb
Dimension A	7.68	7.68	13.98
Dimension B	8.89	10.04	9.06
Dimension C	7.09	7.09	6.5
Dimension D	28.15	30.71	43.9
Dimension E	2.83	3.54	5.51
Dimension F	3.54	4.33	9.06
Dimension G	1.42	1.97	2.76
Dimension H	23.43	25.99	38.59



DIMENSIONS (SEE TABLE BELOW)



- Compression loadcell with integral display
- Determining center of gravity
- Measuring force in machinery
- Rugged and weatherproof
- Overload counter
- Audible setpoint alarm
- Pre-set tare
- Multi-range
- Peak hold function
- 2200 lb to 11,000lb Capacities

Part Number	LBP1TU	LBP2TU	LBP5TU
Capacity	2200lb	4400lb	11000lb
Resolution	1lb	2lb	2lb
Accuracy	±0.3%		
Units	lb		
Safety Factor	5:1		
Protection	NEMA 4X / P65		
Battery Type	9v		
Battery Life	80 hours continuous		
Display Type	1" LCD		
Op Temp	14° F - 122° F		
Net Wt	2lb	3.3lb	6.8lb
Shipping Wt	12lb	13.2lb	15lb
Dimension A	3.19	3.62	3.62
Dimension B	3.19	4.61	5.35
Dimension C	4.45	4.41	4.41
Dimension D	3.54	4.09	4.53
Dimension E	4.09		

SPECIFICATIONS [inches]

Bishop Lifting Products, Inc.
LOADBLOCK PLUS



HANDHELD PLUS

- Handheld display for all non-radio Straightpoint products
- Pushbutton control for tare, units, peak hold, offset adjustment and on/off
- Supplied with 35 feet of cable



Part Number	HHP10MU
Display Rate	3 H
Sample Rate	Normal - 10 H / Peak Hold - 100 h
Excitation	5v
Max Sensitivity	2.5 m /v
Non-Linearity	0.001% FR
Max Resolution	1.99999 (normal mode)
Battery Type	9 volt Alkaline
Battery Life	80 Hours continuous
Display Type	0.87 LCD
Op Temp	14° F - 122° F
Net Wt	7.7lb

DESKTOP CONTROLLER DATALOGGING SOFTWARE

- Simple, Self-installed Window Based PC Package
- Allows Full Control and Display of Any of the plus Products
- Logs Data into Microsoft Excel Spreadsheets
- Wire version is Supplied With 35 feet of Cable
- Supplied With USB Converter

Part Number	DCP10MU	RDCPU
For use with	LLP, MWP, LBP	Radio loadcells

CABLES

Custom made extensions in length to our standard cables - priced per foot.

Part Number	EXT/#U
-------------	--------

WIRELESS LOADCELL MODULE

Connect to any loadcell to convert it into a wireless system.

Part Number	T24-ACMU
-------------	----------

