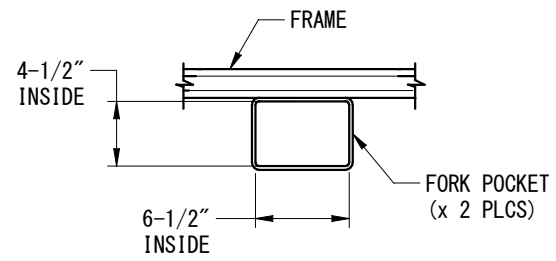
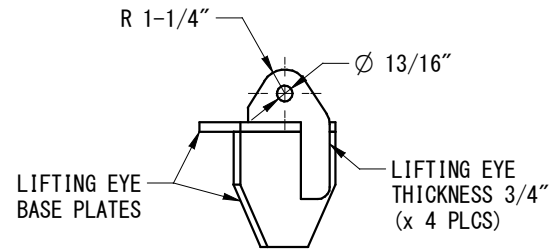


REVISION HISTORY			
REV.	DESCRIPTION	DATE	APPROVED
0	PRELIMINARY	10/01/03	TM
0	CUSTOMER DRAWING	01/03/11	SE



DETAIL A



SECTION B-B

NOTES:

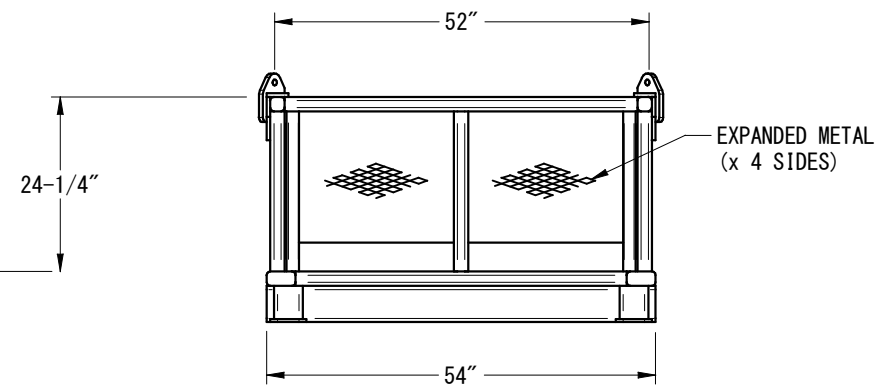
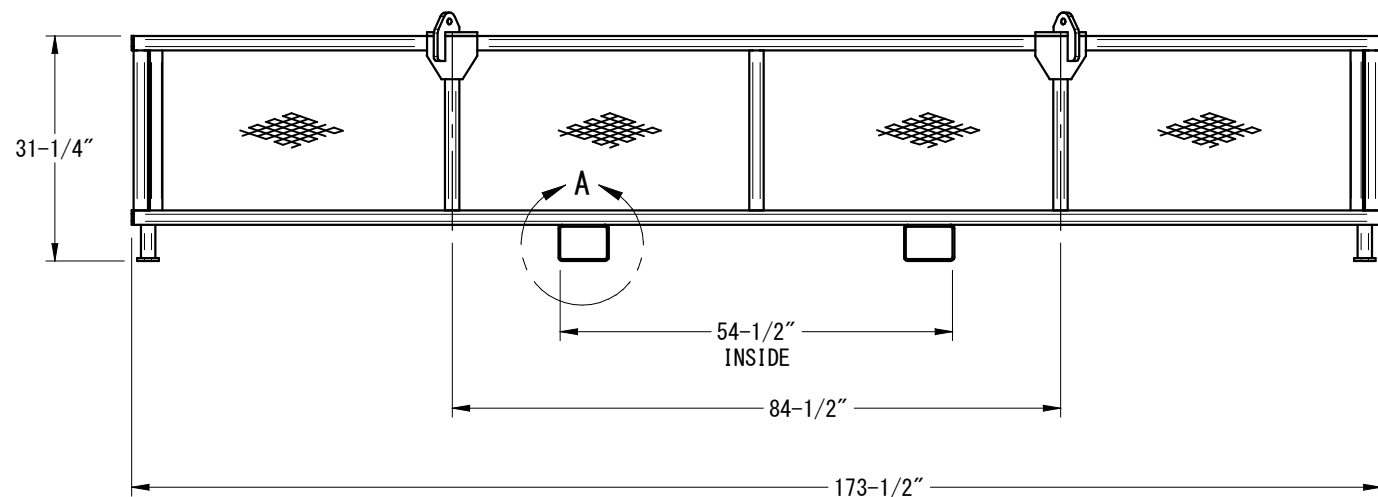
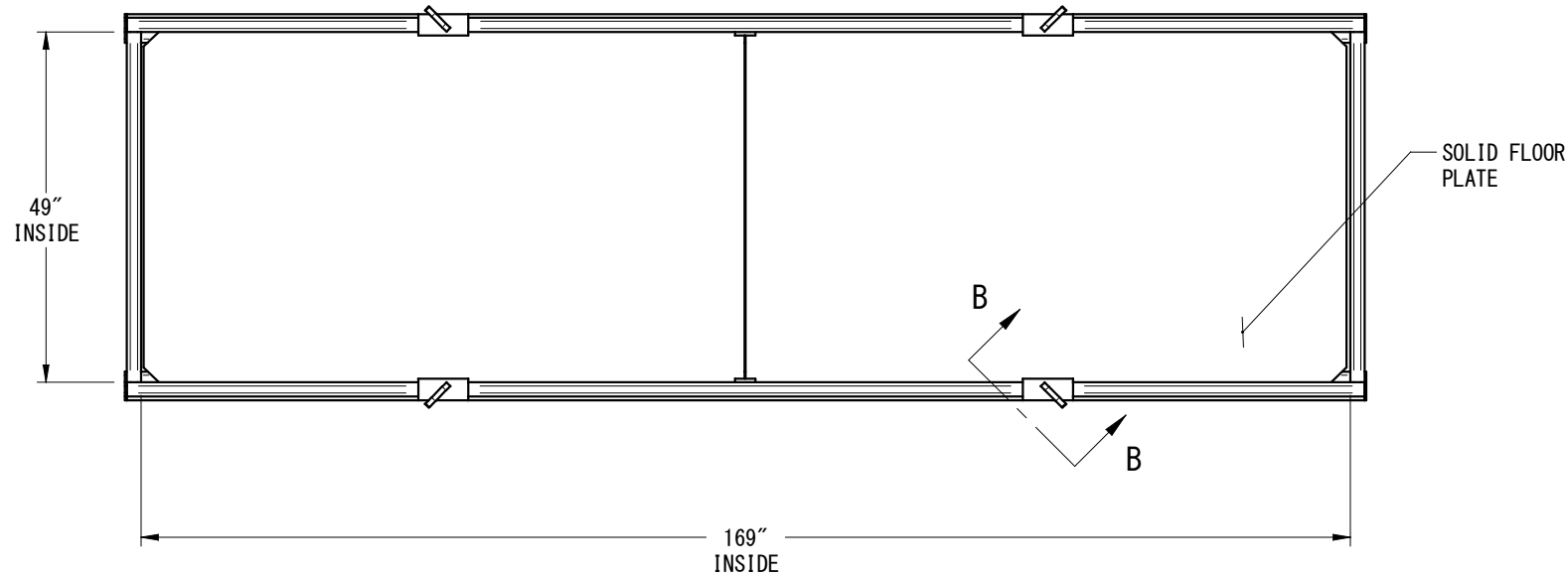
1. ALL WELDS PER AWS D1.1, 1996, D14.1, 2000. ALL WELDS 3/8 FILLET UNLESS OTHERWISE SPECIFIED. FCAW E71T-1
2. BREAK ALL EDGES AND CORNERS UNLESS OTHERWISE SPECIFIED CHAMFER EDGES APPROX. 1/8"
3. THIS LIFTING EQUIPMENT MEETS OR EXCEEDS ANSI/ASME B30.20 "BELOW THE HOOK LIFTING DEVICES"
4. RATED CAPACITY IS 1500 LBS.
5. LOAD TEST TO 1.25 x RATED CAPACITY
6. PRIMER COAT PLUS ONE COAT FINISH, SAFETY YELLOW

RECOMMENDED RIGGING:

- 4 (EA) BOLT TYPE SHACKLE 5/8" NOM. WLL: 3-1/4 metric tons
- 1 (EA) BLP-401 SLING: 1/2" dia. x 8'

* NOTE

KEEP LIFTING LOAD (CENTER OF GRAVITY) CENTERED AND SYMMETRICAL TO TOP LIFTING LUG AT ALL TIMES.
 ONLY QUALIFIED PERSONNEL SHOULD USE THIS DEVICE.
 SAFE RIGGING & LIFTING PRACTICES SHALL BE USED AT ALL TIMES.



DRAWING APPROVAL
 BY _____
 DATE _____
 ___ AS DRAWN ___ AS NOTED

TOLERANCE UNLESS NOTED ALL FRACTIONAL ± 1/16" .0 ± 0.1 .00 ± 0.02 .000 ± 0.005 ANGULAR TOLERANCE UNLESS NOTED ALL ANGULAR DIM. ± 1° UNLESS NOTED ALL MACHINED SURFACES PER ASME/ANSI B46.1 125 √μin	CHECK OFF			125 McCARTY DRIVE P. O. BOX 15619 77220 HOUSTON, TEXAS BLP SOLUTIONS, INC. THIS DRAWING CONTAINS CONFIDENTIAL INFORMATION. DATA CONTAINED WITHIN IS TO BE USED FOR INTENDED PURPOSES ONLY. NO DUPLICATION OR DISCLOSURE ALLOWED WITHOUT PRIOR WRITTEN CONSENT FROM BLP. ALL DUPLICATES SHALL BE RETURNED OR DESTROYED IMMEDIATELY UPON REQUEST!	TITLE MATERIAL BASKET: RATED CAP: 1,500 LBS 14' x 14' x 2'	
	ACTION	APP.	DATE		DWG NO. MB-1891	
	DESIGN	TM	10/01/03		REV. 0	
	DRAWN	SE	01/03/11		EST. WT. 1,900 LBS	
	ENG.	TM	10/01/03	SHEET 1 OF 1		
	CHK.	-	-	PROJECT: 1891		
	USER MANUAL SHALL BE SHIPPED WITH DEVICE AS PER B30.20			THIRD ANGLE PROJECTION		
	SCALE: NTS			B SIZE		