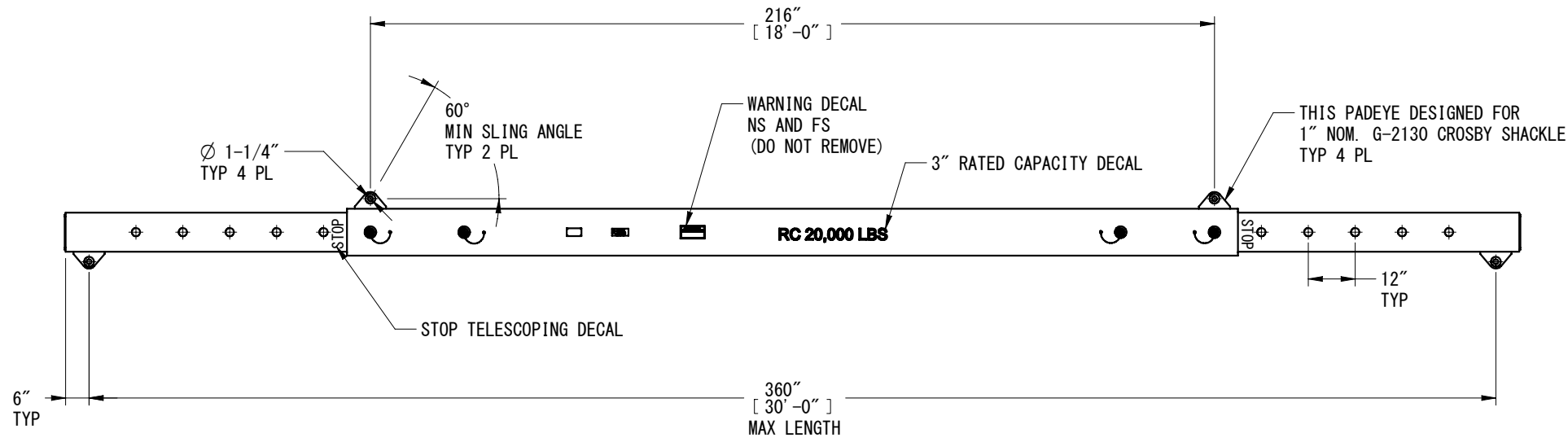
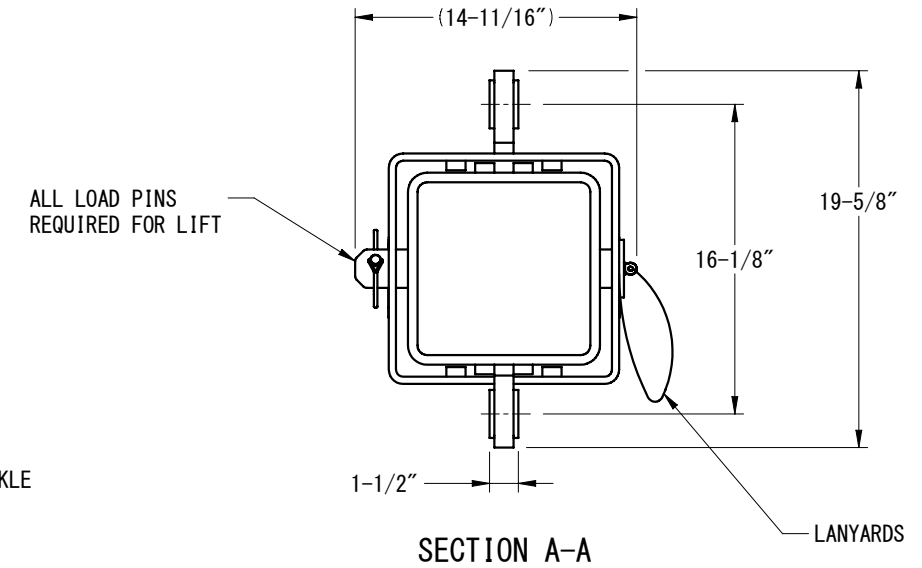
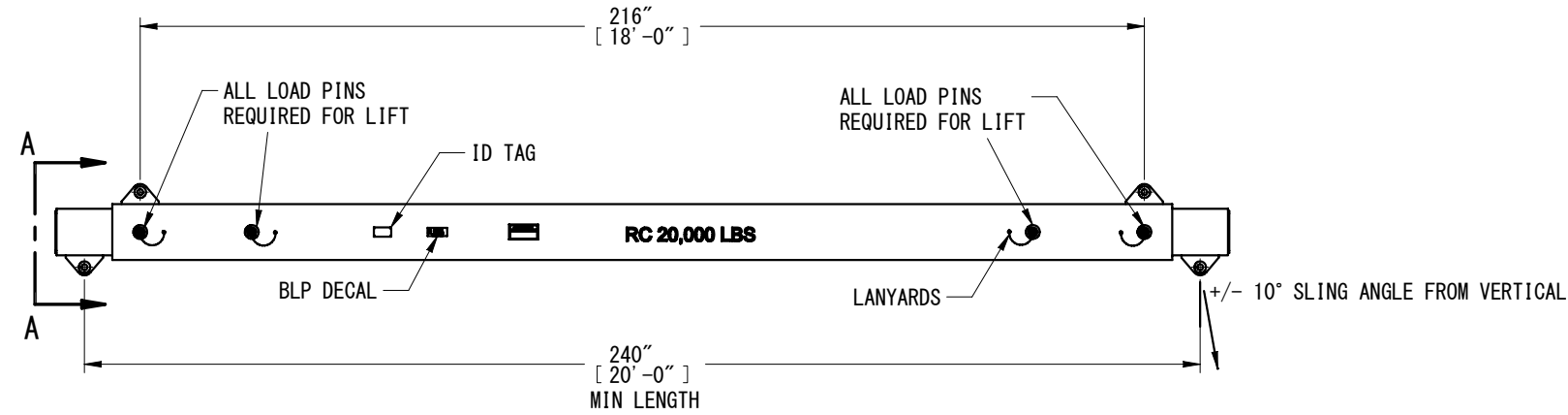


* NOTE
 KEEP LOAD CENTERED AND STABLE AT ALL TIMES DURING LIFTING.
 ONLY QUALIFIED PERSONNEL SHOULD USE THIS DEVICE.
 SAFE RIGGING & LIFTING PRACTICES SHALL BE USED AT ALL TIMES.
 CAUTION AVOID PINCH POINTS.

REVISION HISTORY			
REV.	DESCRIPTION	DATE	APPROVED
0	PRELIMINARY	9-2-10	CH

RECOMMENDED RIGGING:
 4 EACH G-2130 CROSBY SHACKLES, 1" NOMINAL
 1 EACH BLP-201 (2 LEG SLING) 1" WIRE ROPE @ 216" LG



DRAWING APPROVAL
 BY _____
 DATE _____
 _____ AS DRAWN _____ AS NOTED

GENERAL NOTES:

1. WELDING PER AWS D1.1 AND D14.1. ALL WELD PROCESS UNLESS OTHERWISE NOTED- FCAW.
2. BREAK ALL SHARP EDGES AND CORNERS UNLESS OTHERWISE SPECIFIED APPROX 1/8.
3. DESIGN OF STRUCTURAL, PERFORMANCE, & SAFETY AS PER ASME/ANSI B30.20 & BTH -1. SERVICE CLASS 0 DESIGN CATEGORY B. DESIGN TEMP. 25 DEG F TO 150 DEG F.
4. RATED CAPACITY OF THIS DEVICE SHALL BE 20,000 LBS.
5. COATING SYSTEM SHALL CONSIST OF ONE PRIME COAT AND YELLOW ENAMEL TOP COAT.
6. ESTIMATED UNIT WEIGHT OF THIS DEVICE SHALL BE 2,295 LBS.
7. MEASUREMENTS OF LENGTH TO BE IN INCHES UNLESS OTHERWISE NOTED.
8. TESTING SHALL BE PERFORMED AS PER BLP PROCEDURE & ASME B30.20, TO 1.25 X RATED CAPACITY.
9. DATA PLATES/DECALS OR STAMPS SHALL BE PLACED ON DEVICE AS PER B30.20 IN LOCATIONS AS SHOWN.

TOLERANCE UNLESS NOTED ALL FRACTIONAL ± 1/16" .0 ± 0.1 .00 ± 0.02 .000 ± 0.005	CHECK OFF			125 McCARTY DRIVE P. O. BOX 15619 77220 HOUSTON, TEXAS BLP SOLUTIONS, INC.	THIS DRAWING CONTAINS CONFIDENTIAL INFORMATION. DATA CONTAINED WITHIN IS TO BE USED FOR INTENDED PURPOSES ONLY. NO DUPLICATION OR DISCLOSURE ALLOWED WITHOUT PRIOR WRITTEN CONSENT FROM BLP. ALL DUPLICATES SHALL BE RETURNED OR DESTROYED IMMEDIATELY UPON REQUEST!
	ACTION	APP.	DATE		
ANGULAR TOLERANCE UNLESS NOTED ALL ANGULAR DIM. ± 1°	DESIGN	CH	9-1-10	TITLE TELESCOPIC SPREADER BEAM 20' TO 30' RC 20,000 LBS	DWG NO. TS-4903
	DRAWN	CH	9-2-10		
UNLESS NOTED ALL MACHINED SURFACES PER ASME/ANSI B46.1 125 √µin	ENG.	CH	9-1-10	THIRD ANGLE PROJECTION	EST. WT. 2,295 LBS
	CHK.	AI	9-2-10		
USER MANUAL SHALL BE SHIPPED WITH DEVICE AS PER B30.20			PROJECT: JOB # 4903	SCALE: NTS	SHEET 1 OF 1

REV. 0